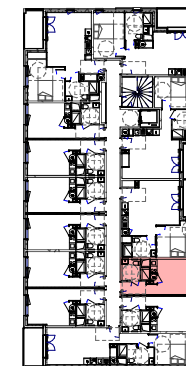
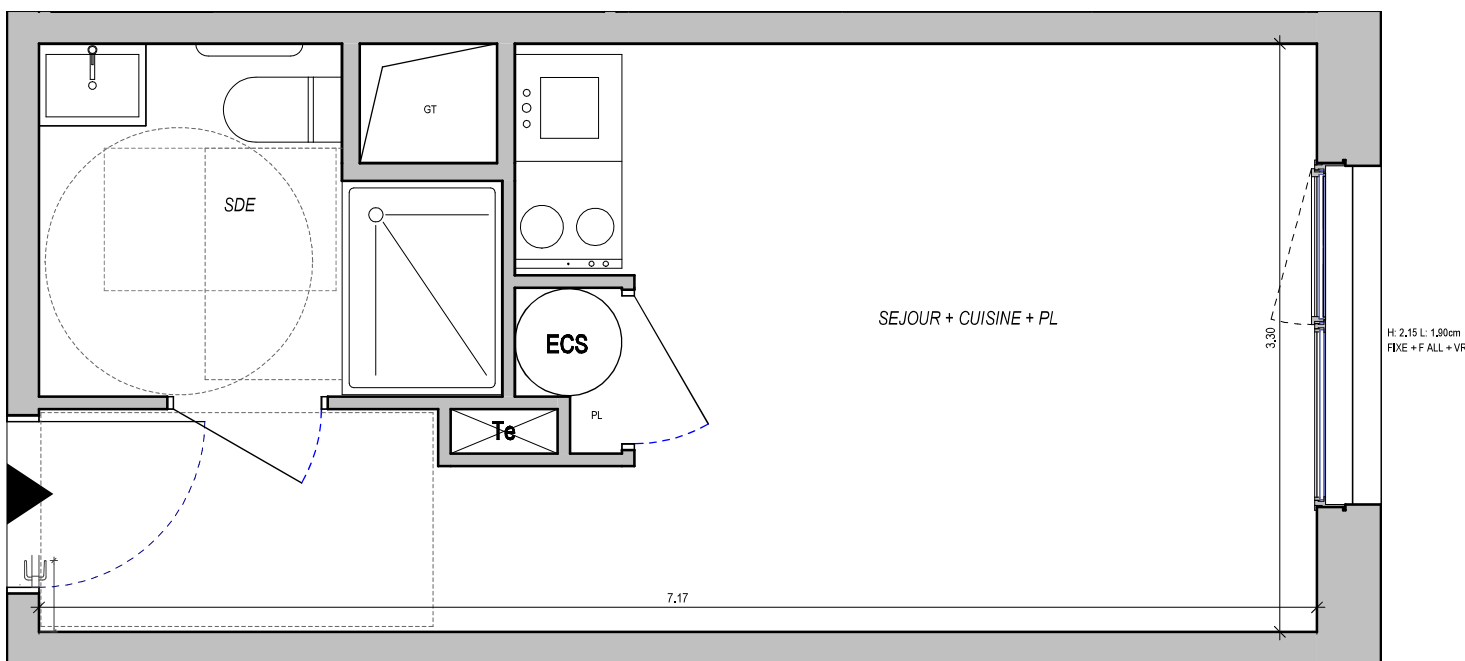




303 - R+2 - T1

| | |
|---------------------------------|----------------------------|
| SEJOUR + CUISINE + PL | 17.86 m ² |
| SDE | 4.46 m ² |
| SURFACE HABITABLE TOTALE | 22.32 m² |



| | | | |
|----|--------------------------|--------------|-------------------------------------|
| GT | Gaine technique | PL | Placard |
| | Sofites : HSP 2.20m env. | VR / VRE / m | Volet Roulant / Electrique / manuel |
| F | Fenêtre | R | Réfrigérateur |
| PF | Porte fenêtre | LL / LV | Lave Linge / Lave Vaiselle |
| | Tableau électrique | ECS | Ballon d'Eau Chaude Sanitaire |

09/02/2024

Indice : A

